



# Project Light Book





## WELCOME TO Future Designs

Future Designs is an international lighting manufacturer delivering world class luminaires across UK, Europe, USA and U.A.E. where our reputation to design develop manufacture and deliver products is second to none.

We constantly invest in reducing our impact on the environment by the efficient use of materials and components to ensure our carbon usage is continuously driven downwards.

We design, develop, engineer, and produce our products to fulfil one desire: **MAKING LIGHT WORK.**

We are a British manufacturer based in Kent and Soho.

Our U.A.E facility is based in Dubai.

Our projects span from 5k sq ft to 1m+ sq ft.

We have a local to global reach.

We are client focused.

# SUSTAINABILITY

Concern for our planet commences long before our lights switch on.

We are committed and driven to constantly investigating means to reduce our carbon usage. We design and manufacture with at least second life usage at the forefront.

The carbon careful™ initiative is proof of our desire to reuse rather than recycle.



# RESPONSIBILITY

At Future Designs we recognise that good energy performance is sound financial management.

With ever increasing energy prices, the introduction of carbon taxes and increased volatility in energy markets, the energy performance of a building is moving up the agenda of owners and occupiers alike.

We have always produced high efficiency, low energy luminaires but we are constantly striving to do even more. Giving you useful light in the right places for lower energy input is our aim and we do this with not just highly efficient luminaires, but efficient control systems, dimmers, presence and daylight detectors.

Reduced energy use means lower carbon emissions for the entire life of the product. We have also continually worked towards creating less waste and fewer emissions in our manufacturing process.

We produce Environmental Product Declarations (EPD) for all our luminaires in line with EN1508. Which gives building owners and users clear information on the environmental impact of the luminaire.



# carbon careful™

## Welcome to carbon careful™.

Over the last 13 years, Future Designs has pioneered the concept of reusing existing luminaire carcasses and has become the market leading expert in adapting existing fluorescent fixtures to accept LED technology and updating existing LEDs to newer more efficient versions.

LED technology has evolved to become the lighting medium of choice and Future Designs has been at the forefront of this technological breakthrough. We are renowned for our expertise in this area of lighting science and have proved to be pioneers in this field.

We reduce energy and carbon usage by reusing the original carcasses which in turn is saving hundreds of tons of mild steel, aluminium and plastics being manufactured.



# OUR VALUES

## **Future Designs is a business built on an obsession with light.**

We are full of knowledge and passion and we understand the importance of light. We are innovative, energetic and enthusiastic as a team.

We are problem solvers and confident in our ability to meet any challenge presented to us.

We are involved at every step, to achieve a great outcome for all our projects; from the initial enquiry until the final flick of the switch.

## **We know the power of light**

### **WE ARE 'IN THE KNOW'**

We study our business, and our business is light. We are fastidious in researching our clients' needs so that our solutions are based in reality, using our knowledge and experience.

### **WE ARE RIGOROUS**

We are extremely thorough. We take time and pay attention to detail. We ensure there is quality and accountability at every level. We believe that even tiny improvements make a big difference.

### **WE ARE ESSENTIAL**

Our clients rely on us for a quality product. Our clients rely on us for our expertise. We make a difference.

### **WE ARE HUMAN**

We are fun and easy to get along with. We build lasting relationships and work as a team with our clients and with each other. We understand our clients' challenges.

### **WE ARE ENERGETIC**

We are enthusiastic and always commit to deliver beyond expectation. Our energy shines through every part of the operation.

### **WE ARE CREATIVE**

We are a team of problem solvers. We are continually challenging ourselves to improve. We explore every option to bring something extra to everything we do.

# DESIGN

## Relux / Dialux

For professional light planning and scheme design.

## SolidWorks

3D product design and engineering, bespoke product design and testing.  
Accurate drawings and models for concept and manufacture.

## AUTOCAD, REVIT & BIM

AutoCAD for layout designs. We are BIM ready, with models available for architectural & Revit models.

## Photopia

An advanced lighting design and simulation package giving fast and accurate photometric analysis. Photopia allows you to produce virtual luminaires without timely physical prototypes enabling a number of design variations to be tested without the need for tooling.

## Environmental Product Declaration (EPD)

We have EPD documents for our luminaires demonstrating the environmental impact of products. In line with our carbon careful™ initiative we look to minimise our impact on the environment.

## Continual Personal Development (CPD)

Future Designs are accredited to host a range of CPD courses on Lighting & Wellness. Contact us at [light@futuredesigns.co.uk](mailto:light@futuredesigns.co.uk) or 01732 867420.

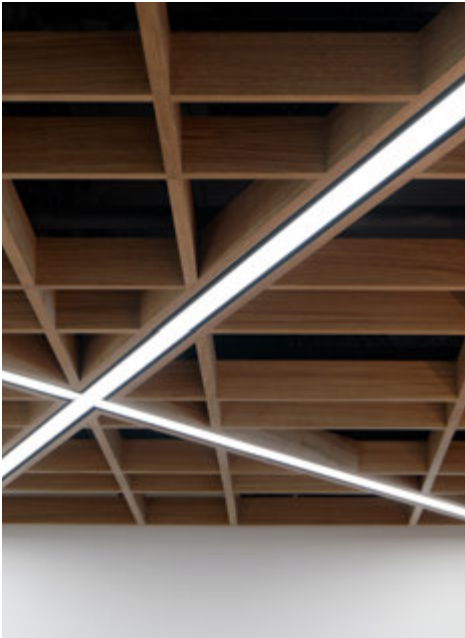
## 3D Printing

Rapid prototyping and design development.



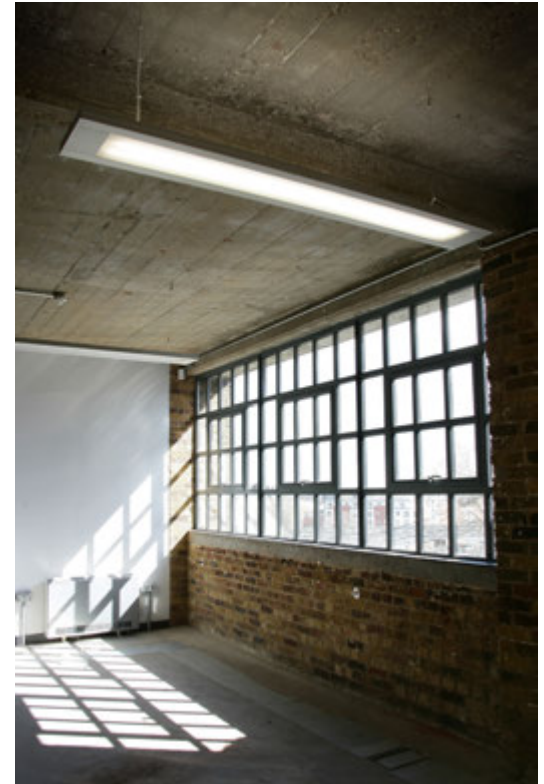


# PORTFOLIO

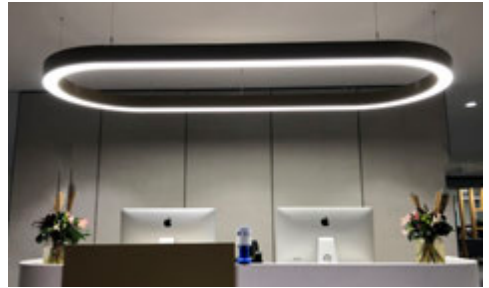


## VANE





## HAL



**OBROUND**

[futuredesigns.co.uk](http://futuredesigns.co.uk)





HALO / BEEM





## VANE – with curved sections





**HUB**



## HUB / BEEM SQ





**VIVID**



**TUBE90**





AER0313 Ø2.2m suspended luminaire influenced by the steering wheel of a vintage car and the music of Motown.

## AER0313



**AER0313**

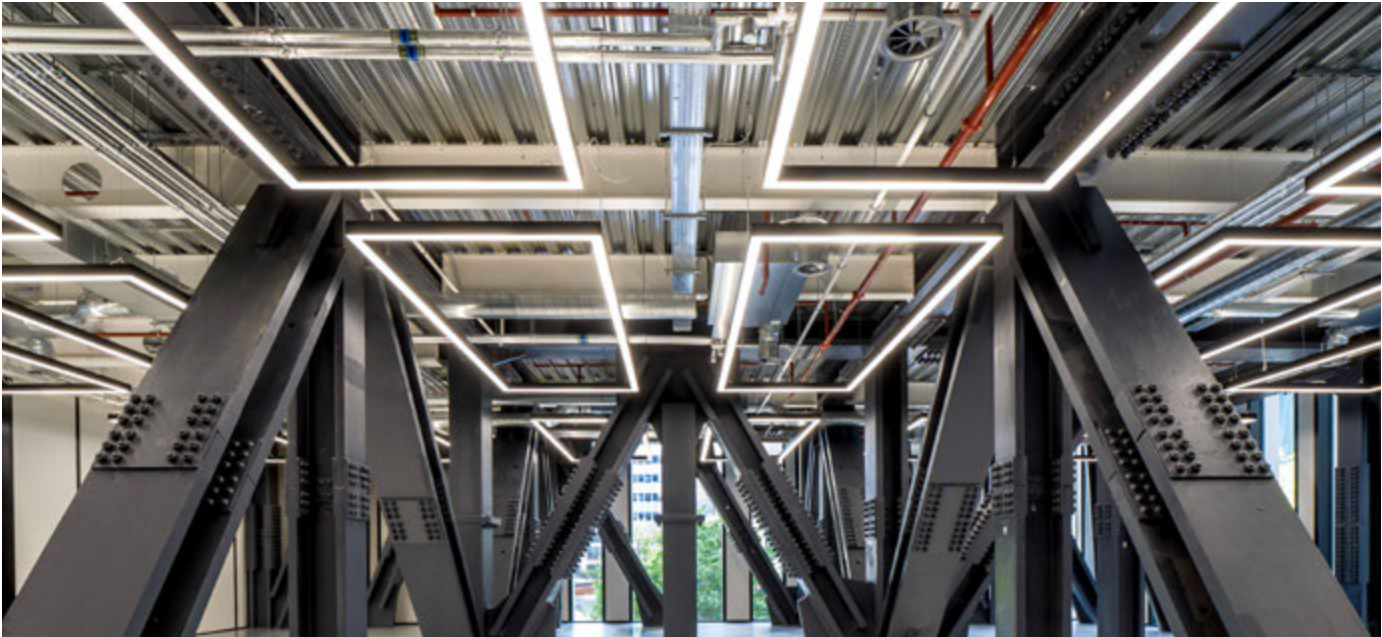
futuredesigns.co.uk 23





**VANE - SQ**

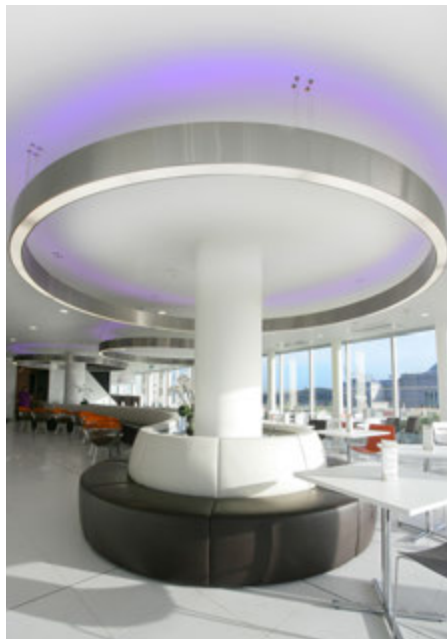




**VANE - SQ**



## HALO / BEEM



**HALO / BEEM**



## KONCAVE





**KONCAVE**

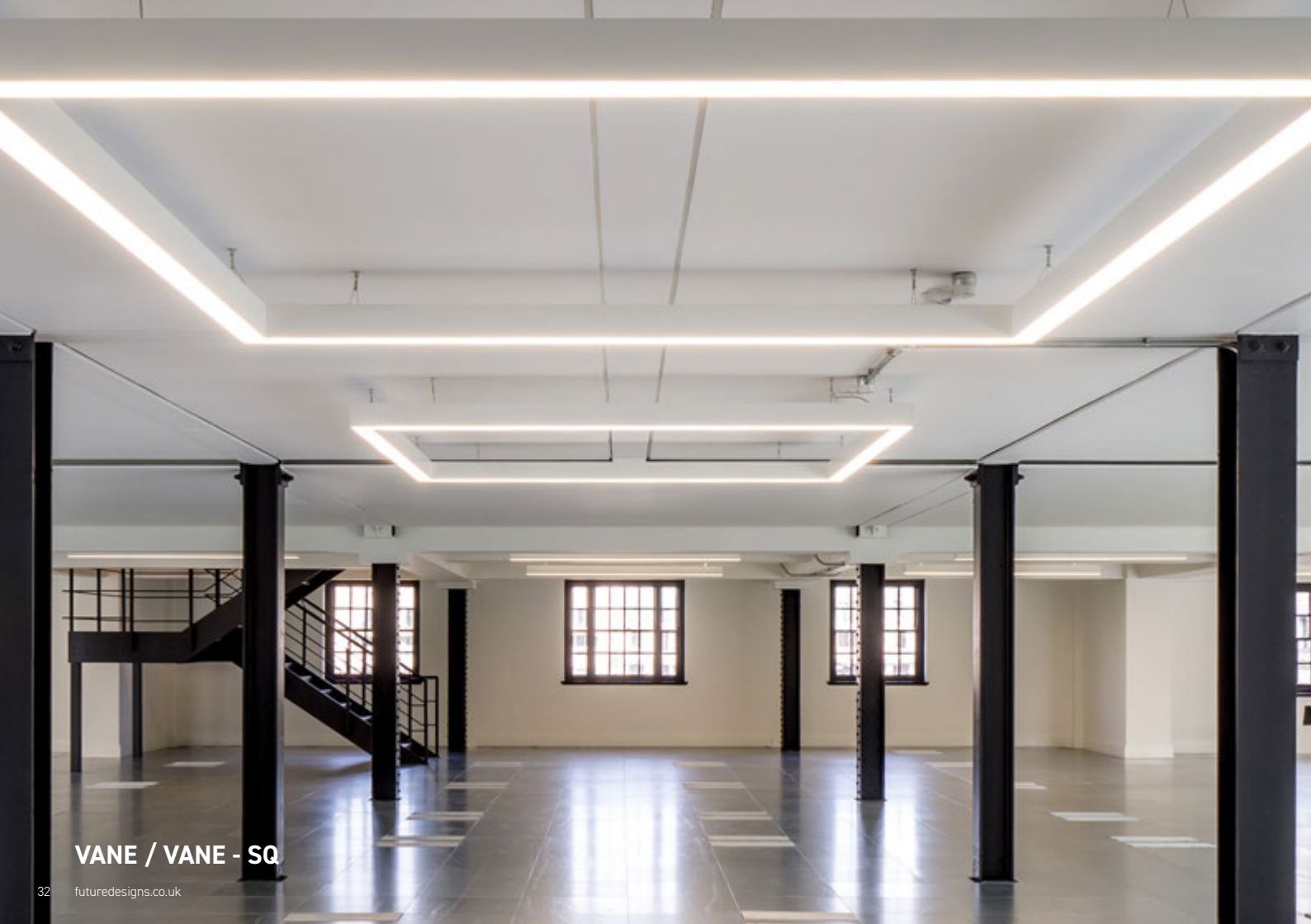
[futuredesigns.co.uk](http://futuredesigns.co.uk)



## HAL

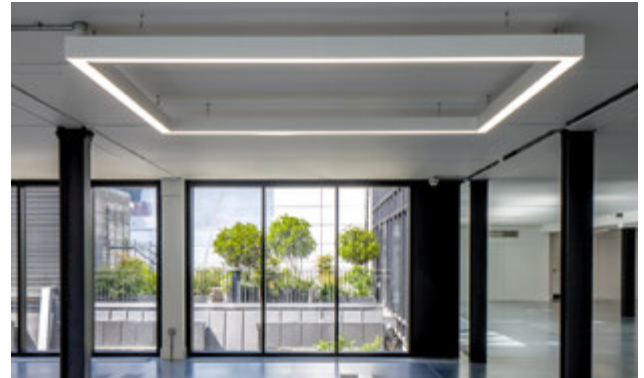


HAL

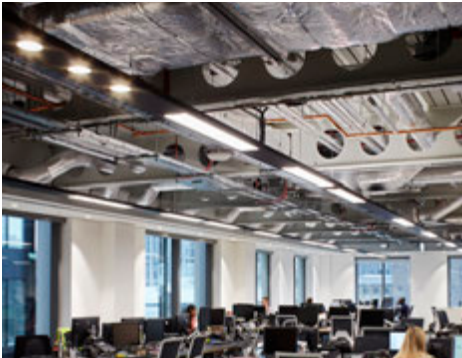


VANE / VANE - SQ

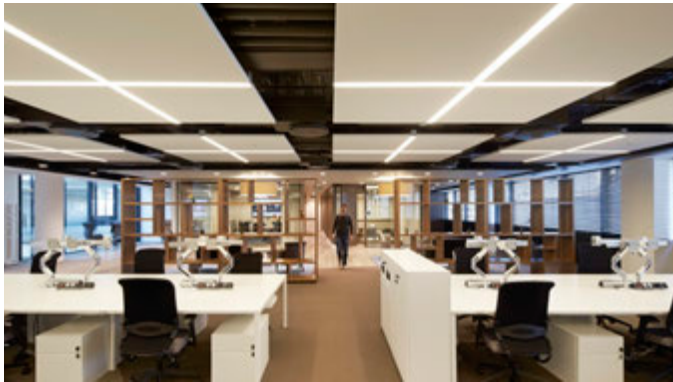
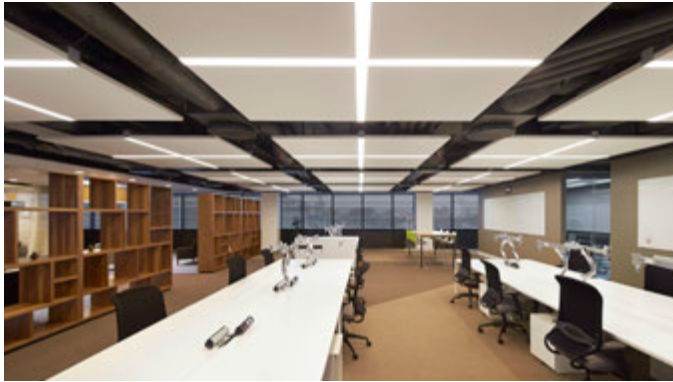




VANE / VANE - SQ

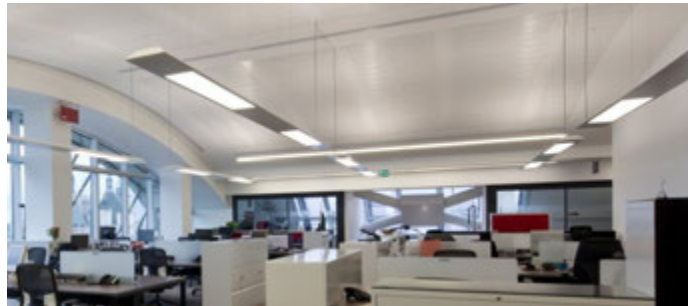
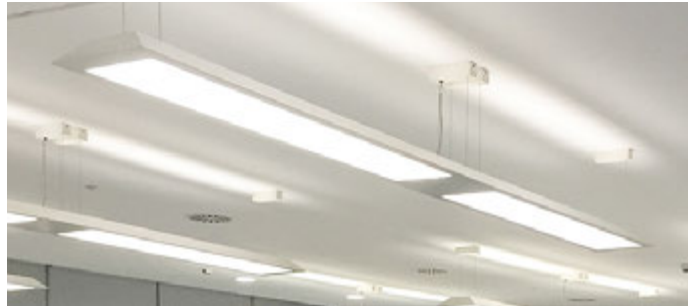


## HAL / BEEMRD100



**VANE CRUCIFORM**

[futuredesigns.co.uk](http://futuredesigns.co.uk)

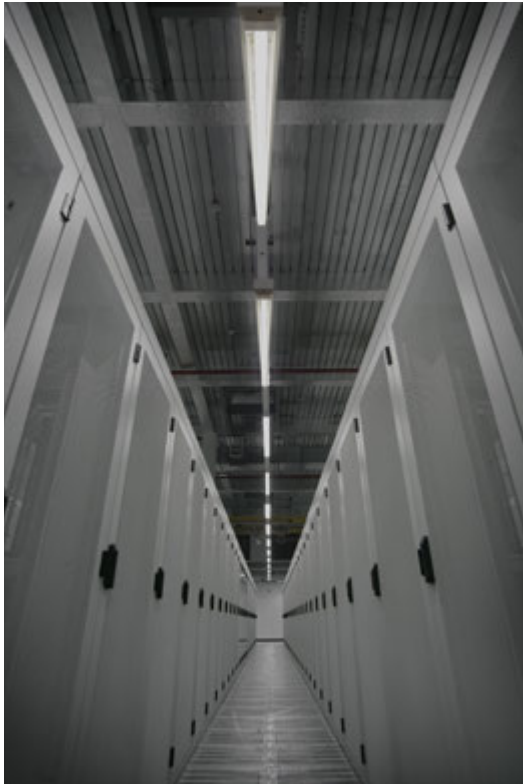


## LATERUL





**LATERUL**



## STEALTHv3

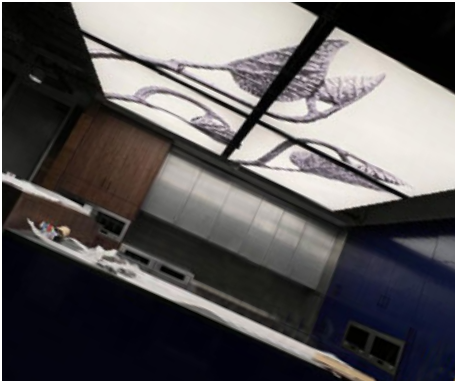


**VANE / BEEM/ TUNEABLE WHITE**



**GLOS**





## STRZ DIGITAL CEILINGS



## VANE - SQ



**HASHTAG**





## EXEMPLAR





## VANE 60m RUN LENGTHS



**GLOS**



**GLOS**





## VANE - TUNEABLE WHITE (3000K)





## VANE - TUNEABLE WHITE (4000K)



Future Designs bespoke lighting for the Elizabeth line. IKON sits on the way finding totems which incorporate emergency and evacuation lighting. PLINTH luminaires uplift the escalator areas.

## IKON / PLINTH



**COPPA**



VANE / BEEM







## A-PLANE



**A-PLANE**

[futuredesigns.co.uk](http://futuredesigns.co.uk)



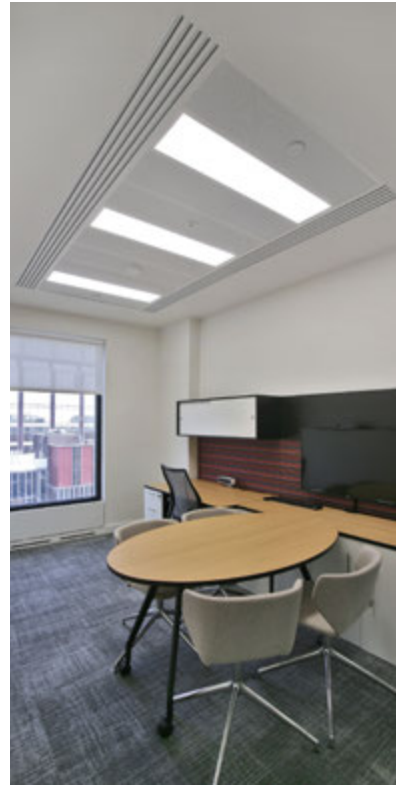
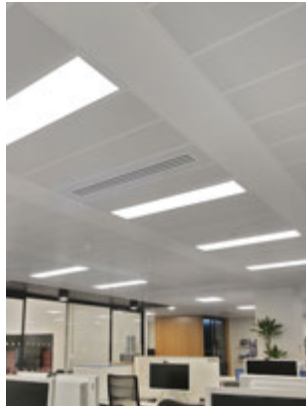
## ART





**NAROLINE**

[futuredesigns.co.uk](http://futuredesigns.co.uk)



## GLOS



**BEEMSQSM & VANE**

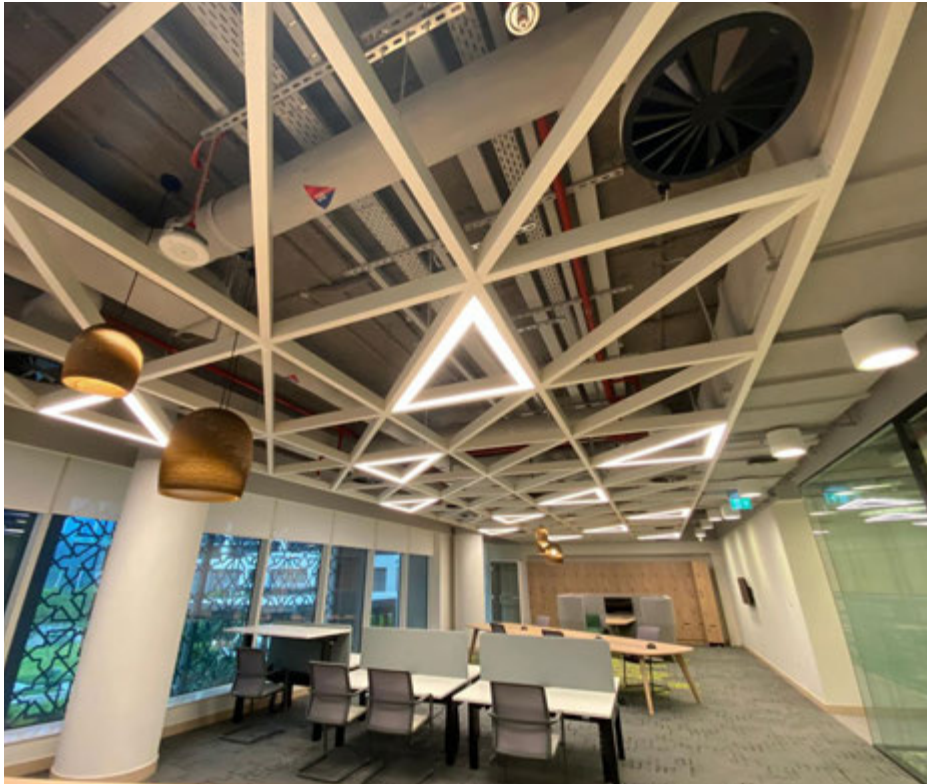


VANE integrated within desk for localised task lighting.



## VANE

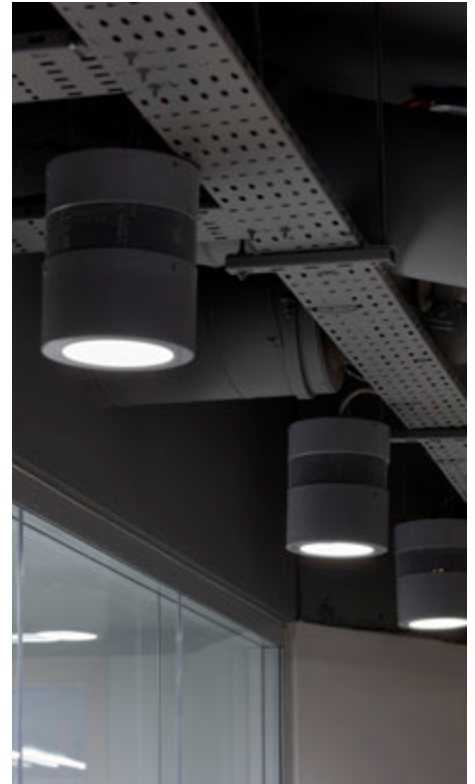




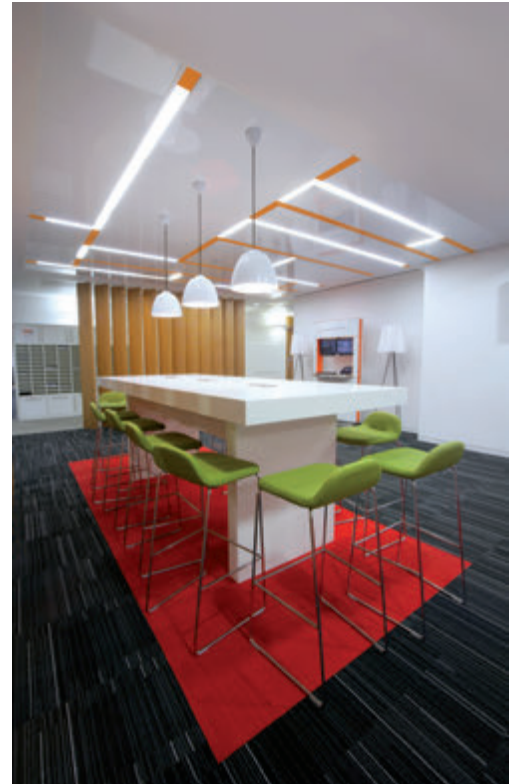
## VANE - TRI / VANE CORNER



**BEEM52**



## BEEM RD SM



## VANE JIGSAW

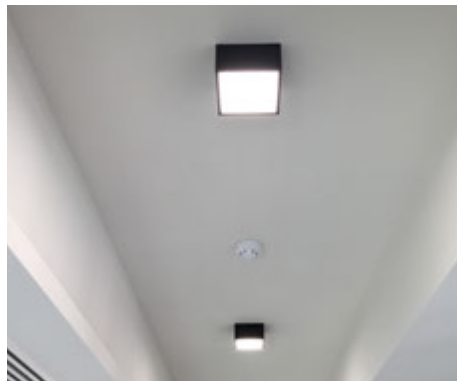




## VANE JIGSAW



**BEEM**





## GLOS







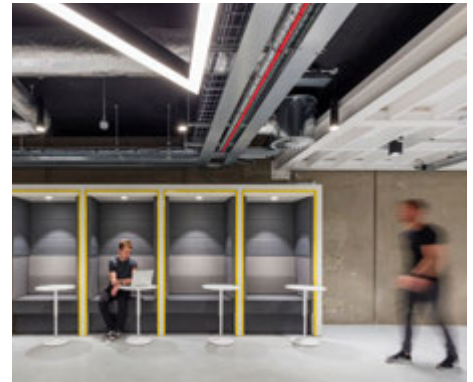
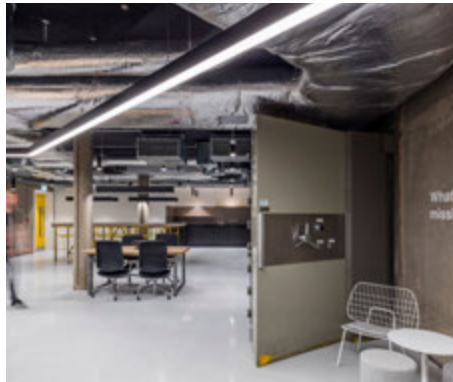
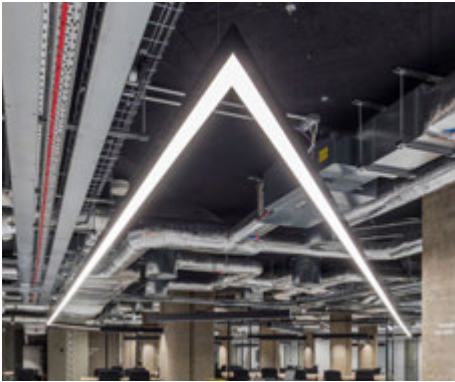
## VANE





## COPPA







**BEL**





**VANE60DD / ART / BAYE / COPPA MAX**





VANE60DD / ART / BAYE



VANE - MSU



VANE - MSU with Artus AC unit

**Artus**<sup>®</sup>



VANE - MSU with acoustic centre

**VANE - MSU**



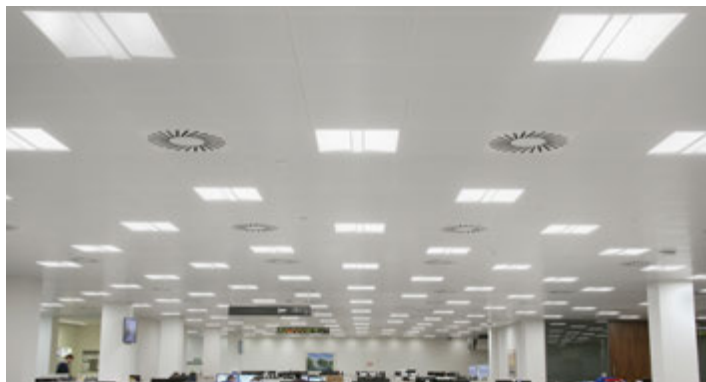
## BAYE



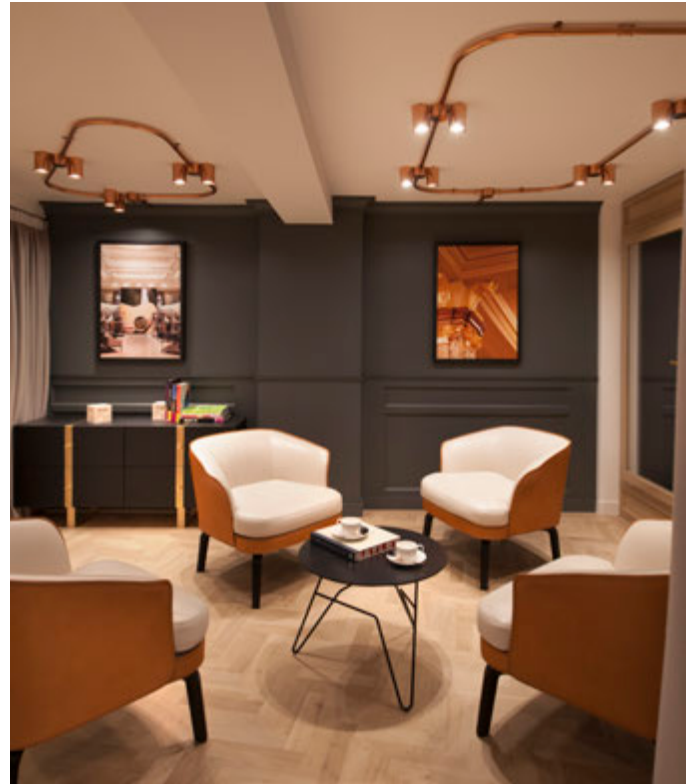


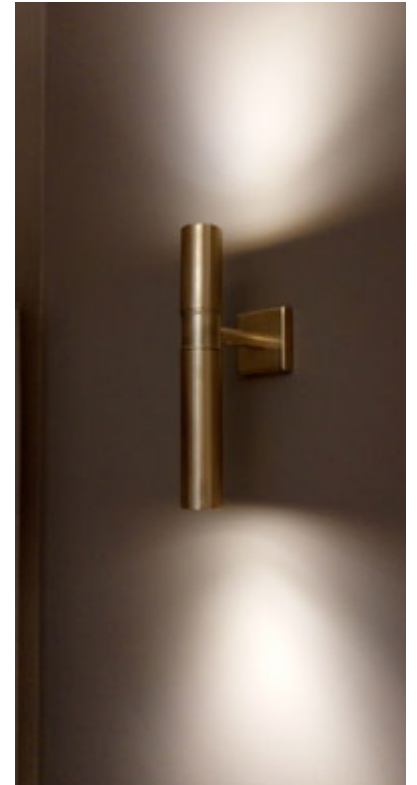
**CANO**

[futuredesigns.co.uk](http://futuredesigns.co.uk)



## AXCEL





## HELIX

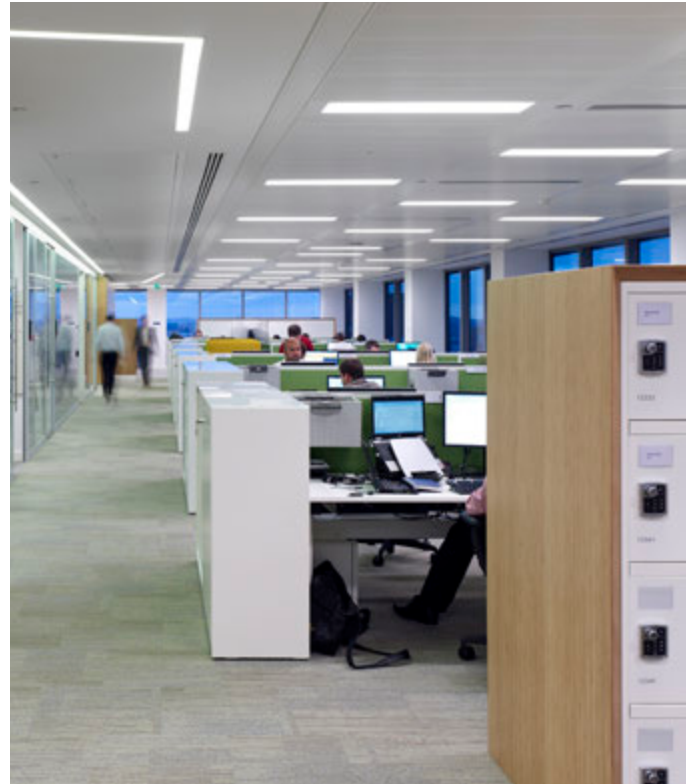




**KONE**



## EXEMPLAR



**EXEMPLAR**



**NAROSTIK / NAROSPOT / NAROBLOK / NAROBIT**





**NAROMONO / NAROSPOT**



## POD





## EXEMPLAR





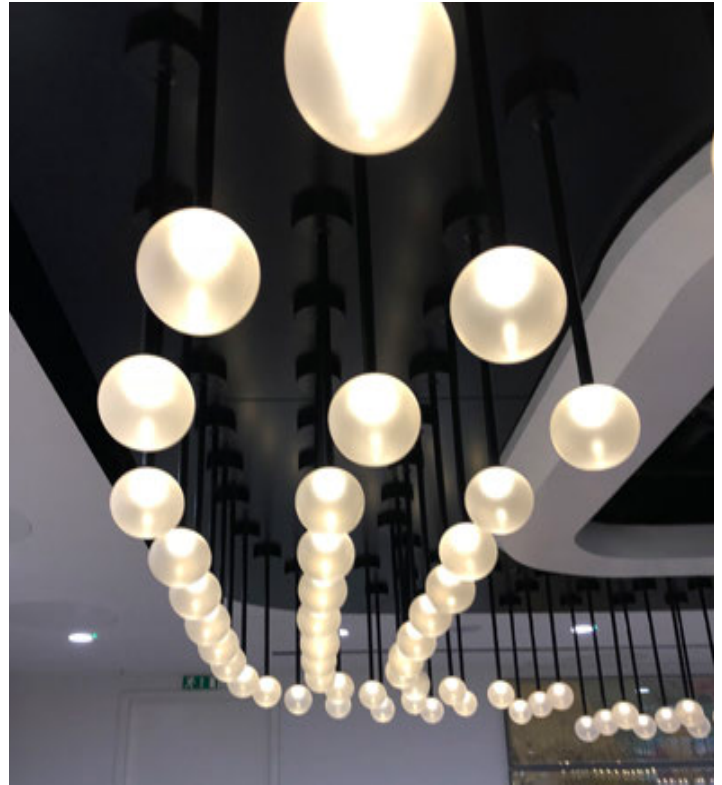
EXEMPLAR / BEEM



## BANDS



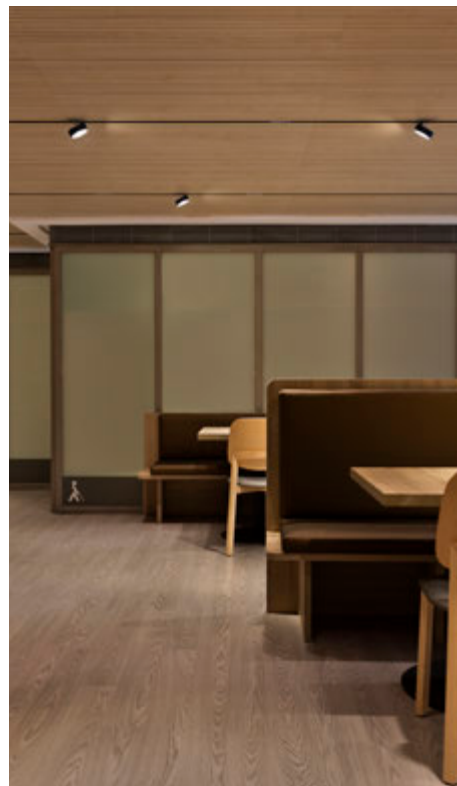
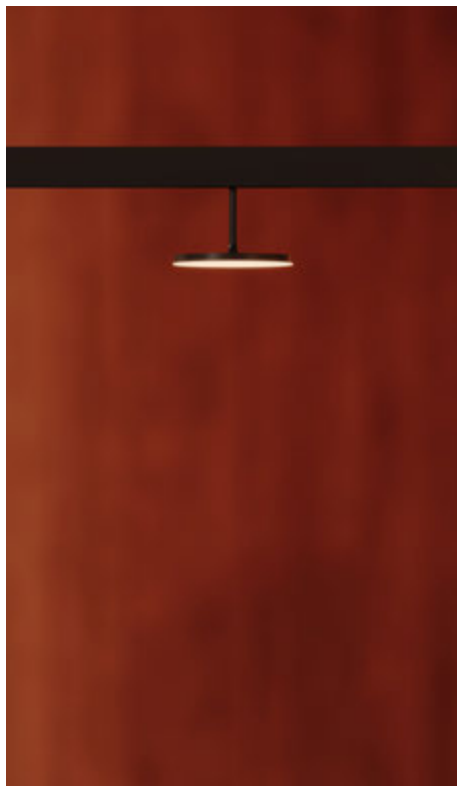
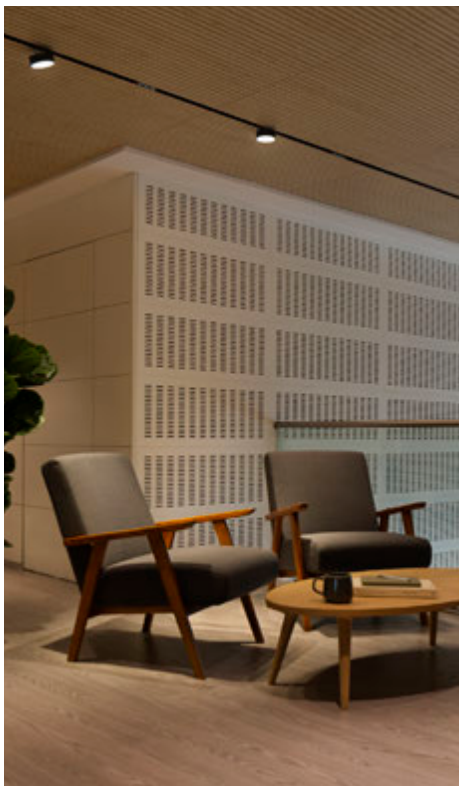
LANTERN tuneable white ceiling installation



GLO LED fibre optic glass globes

## GLO





## NAROBEEEM / NARODISQ

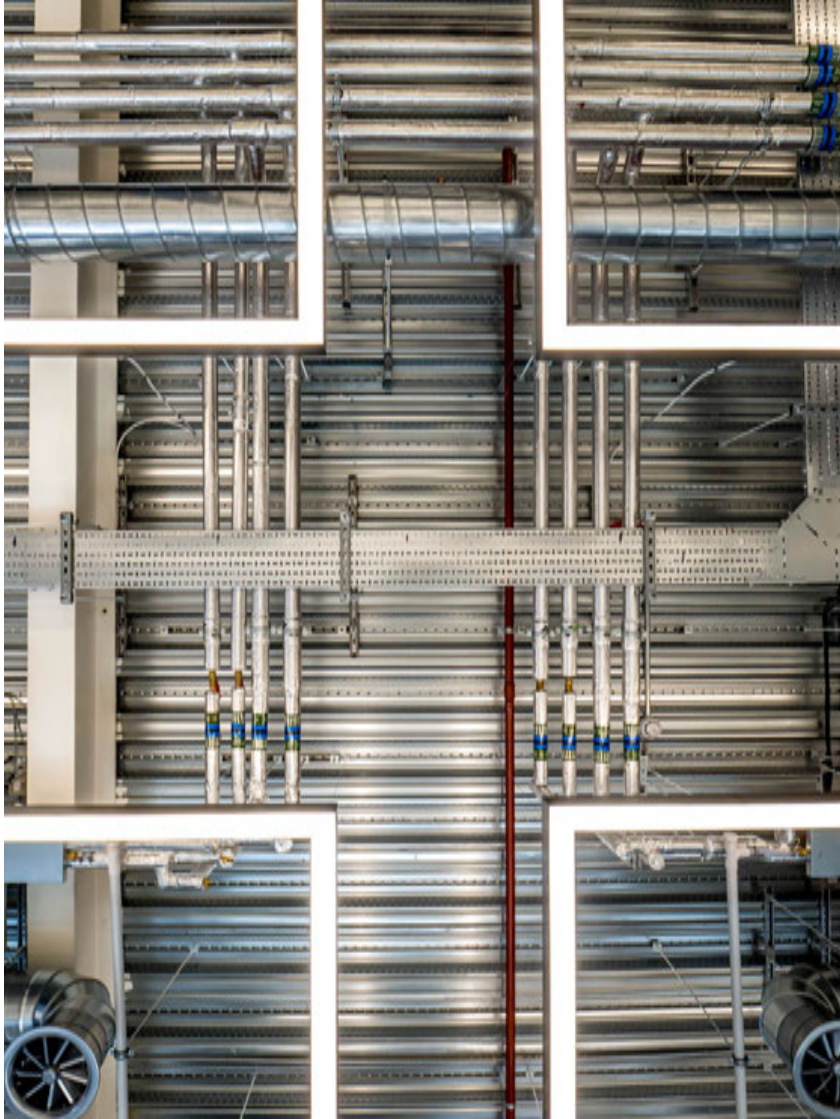


bwin.party  
digital entertainment

HALO

futuredesigns.co.uk





## Future Designs

### Headquarters

The Lighthouse  
Fircroft Way  
Edenbridge  
Kent, TN8 6EJ

### Soho Lighthouse

21 Great Chapel St  
London  
W1F 8FP

### Dubai Office

701, Single Business Tower,  
Business Bay,  
Dubai, UAE

**HQ** +44 (0)1732 867420  
**LDN** +44 (0)20 3961 4500  
**DUBAI** +971 4 385 8199

 Future Designs Ltd

 lightthefuture

 Future Designs

 [light@futuredesigns.co.uk](mailto:light@futuredesigns.co.uk)

**futuredesigns.co.uk**